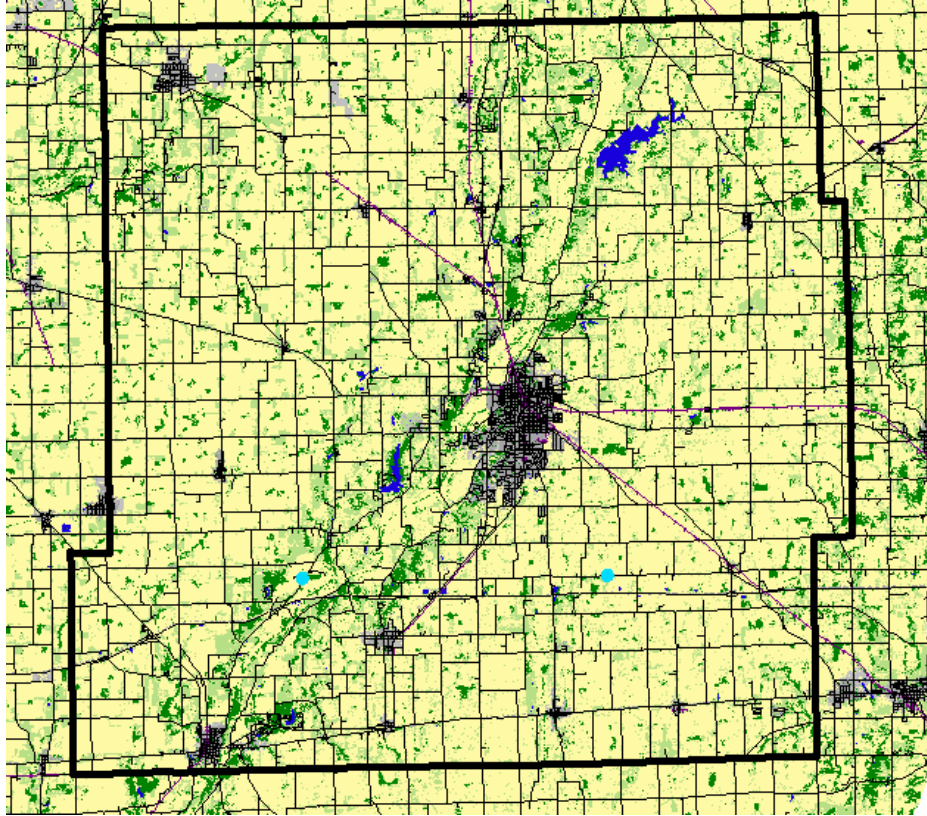


Horseweed Sampling and Screening Results

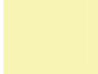
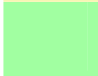
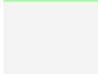

Purdue University Weed Science Henry County Indiana



IN Survey Locations

- No horseweed/marestail observed
- Testing not complete or sample not collected
- Susceptible (85% or greater control)
- Slight Tolerance (60 to 85% control)
- Resistant (less than 60% control)

Land Use

	Cropland
	Pasture/Grassland
	Fallow
	Woods/Wetlands
