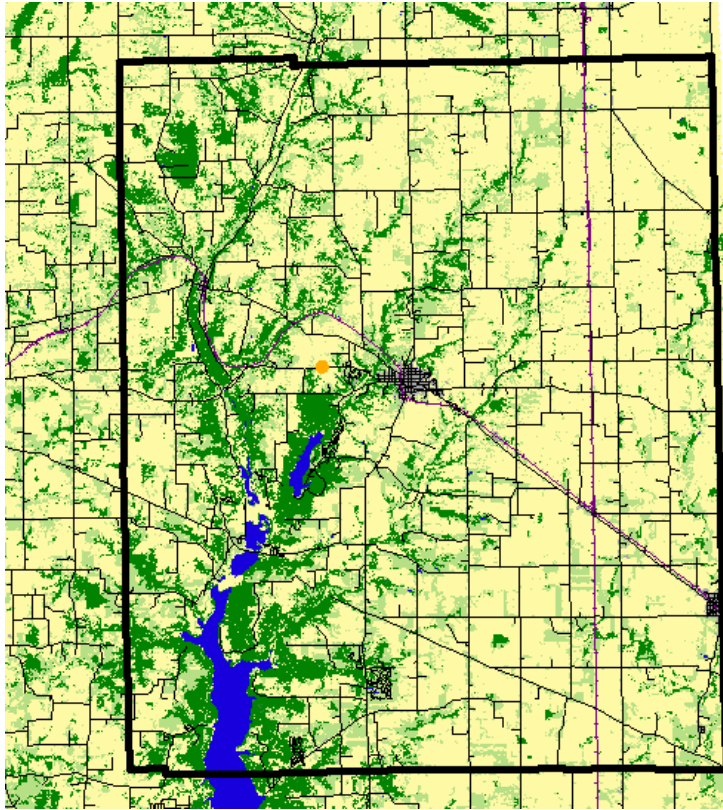


# Horseweed Sampling and Screening Results

## Purdue University Weed Science Union County Indiana



---

IN Survey Locations	Land Use
● No horseweed/marestail observed	Cropland
● Testing not complete or sample not collected	Pasture/Grassland
● Susceptible (85% or greater control)	Fallow
● Slight Tolerance (60 to 85% control)	Woods/Wetlands
● Resistant (less than 60% control)	

---